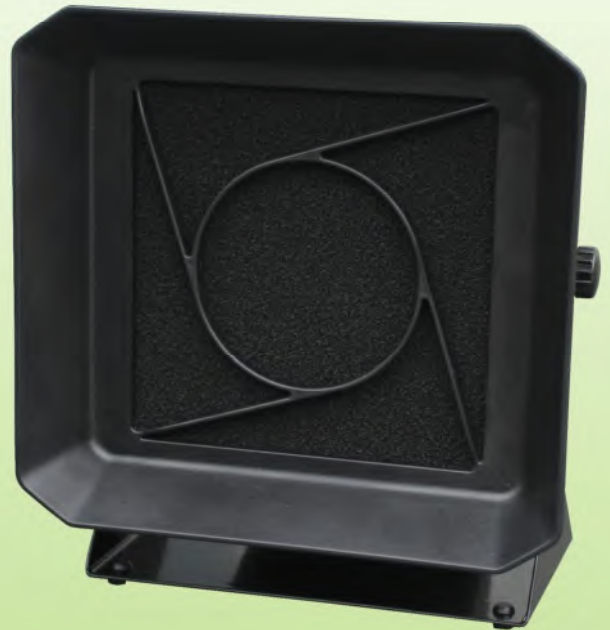


468ESD FUME EXTRACTOR



Fume Extractor Specs. (All Extractors)

Input power	100~120Vac,60Hz 220~240Vac,50Hz
Wattage	20-22W
Max. air volume	95/115 CFM
Outer dimensions (WxHxD)	182x136x200mm (7.16x5.35x7.87in)
Weight (Excluding AC cord)	1168 grams (2.6 lbs.)
Filter size	130mm ²
Filter weight	12 grams



®

XYTRONIC CO.,LTD
<http://www.xytronic.com>



CE
RoHS

HV-2 FUME EXTRACTION SYSTEM (W/FILTER SENSOR ALARM)



Product Features:

- A free-standing extraction system for the safe removal of soldering fumes.
- Brushless, maintenance-free centrifugal fan motor.
- Stay-put, positionable tubes can be cut to length.
- Replacement filters and arms readily available.
- Compact design – fits under workbench.
- Castors for easy re-positioning.
- Variable motor speed control.
- Can use one or both arms.
- Quiet operation.



SPECIFICATION:

Input	100-120Vac 60Hz 220-240Vac 50Hz
Rating	120 W
Air flow	340 cubic metres/hour
Noise level	<50dBA
Dimensions (H x D x W)	446x376x376mm
Weight	23Kg



XYTRONIC CO.,LTD
<http://www.xytronic.com>

HV-2E(FS) FUME EXTRACTION SYSTEM (WITH GAS + HEPA FILTER)



Product Features:

A fume extraction system with two extraction arms that is both portable and compact. The main unit features strong fan performance with a pre-filter and an efficient standard filter, while being on lockable casters for easy maneuverability by one person. The internal pump system utilizes a quiet brushless, maintenance free centrifugal fan motor that efficiently removes fumes from the desired workspaces, while keeping noise to a minimum. The two 7ft. long flexible arms with 3.5" funnels can reach most work areas with ease and make it easy to reach workstations even if far apart from each other.



SPECIFICATION:

Input	100-120Vac 60Hz 220-240Vac 50Hz
Rating	120 W
Air flow	340 cubic metres/hour
Noise level	<50dBA
Dimensions (H x D x W)	446x376x376mm
Weight	23Kg



XYTRONIC INDUSTRIES LTD
<http://www.xytronic.com>

HV-2E FUME EXTRACTION SYSTEM (W/FILTER SENSOR ALARM)



Product Features:

A fume extraction system with two extraction arms that is both portable and compact. The main unit features strong fan performance with a pre-filter and an efficient standard filter, while being on lockable casters for easy maneuverability by one person. The internal pump system utilizes a quiet brushless, maintenance free centrifugal fan motor that efficiently removes fumes from the desired workspaces, while keeping noise to a minimum. The two 7ft. long flexible arms with 3.5" funnels can reach most work areas with ease and make it easy to reach workstations even if far apart from each other.



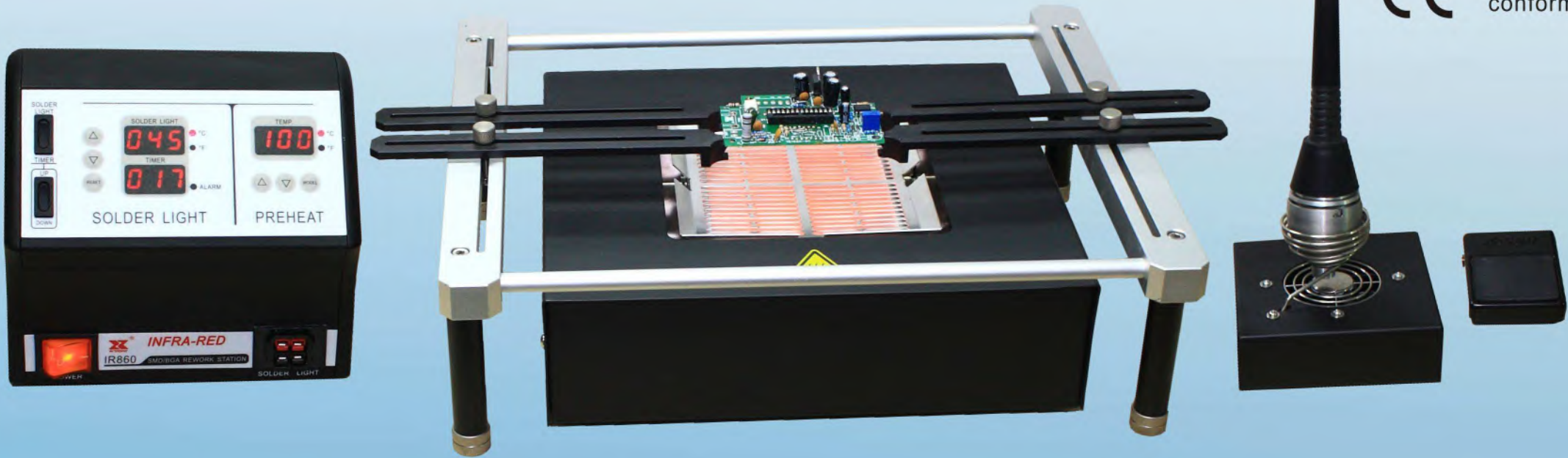
SPECIFICATION:

Input	100-120Vac 60Hz 220-240Vac 50Hz
Rating	120 W
Air flow	340 cubic metres/hour
Noise level	<50dBA
Dimensions (H x D x W)	446x376x376mm
Weight	23Kg

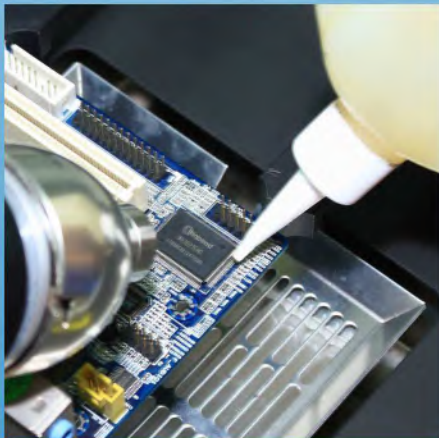


XYTRONIC CO.,LTD
<http://www.xytronic.com>

IR860 SMD/BGA REWORK STATION



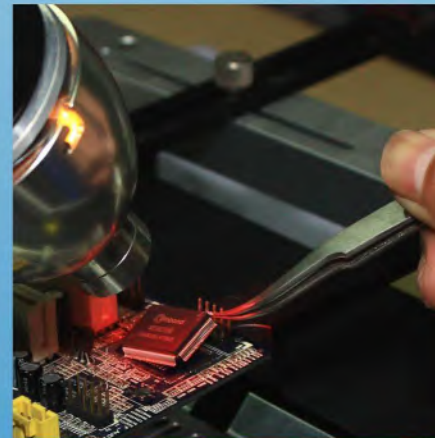
Presentation Graphics:



Apply flux and preheat PCB



Heat component with IR handtool

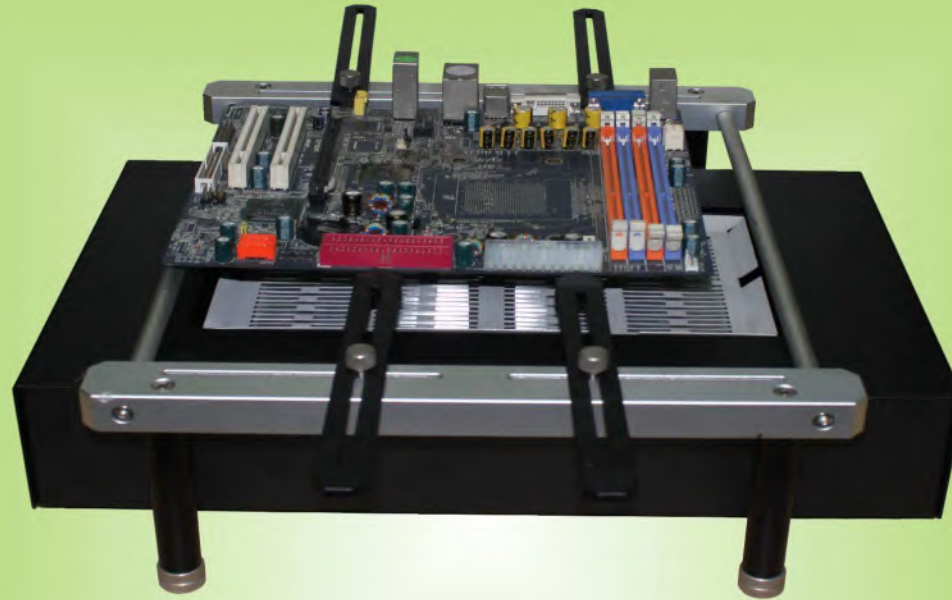


Remove component

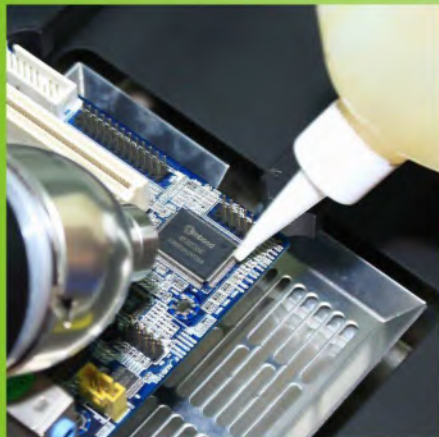
SPECIFICATION:

Input power	100-120Vac 60Hz; 220-240Vac 50Hz	
SOLDER LIGHT	Wattage	15Vac, 150W
	Temperature range	45-350°C 113-662°F
	TIMER	0~900s
PREHEAT	Wattage	650W
	Temperature range	100-350°C 212-662°F

IR860-II SMD/BGA REWORK STATION



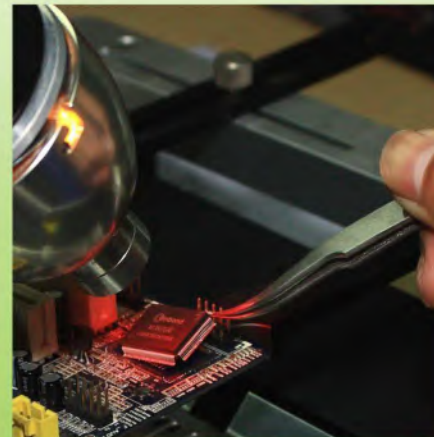
Presentation Graphics :



Apply flux and preheat PCB



Heat component with IR handtool



Remove component



SPECIFICATION :

Input power	100-120Vac 60Hz; 220-240Vac 50Hz	
SOLDER LIGHT	Wattage	15Vac, 150W
	Temperature range	45-350°C 113-662°F
	TIMER	0~900s
PREHEAT	Wattage	1600W
	Temperature range	100-350°C 212-662°F

LF-389D/LF-399D SOLDERING STATION



Humanism interface:
The angle of control panel is conform to humanism .It's easy to read and set



Minitype station:
Less desktop occupation



Eligibility fitting selection:
Provides many kinds of for the customer selects the disposition, enable the customer to obtain a more reasonable enhancement in the economic efficiency.



Ceramics heater:
The unit adopts ceramic heater with the long life of operation.

Product Features:

Password lock: Convenient for control

Minitype station: Less desktop occupation

°C / °F Select Mode: May set display °C / °F

Real-temp modification: Real temperature can modify Manually

Heater fail notification: When the heater failed, "H-E" will Be shown, SIA will power off

SPECIFICATION:

Input power	100-120Vac 60Hz 220-240Vac 50Hz
Wattage	LF-389D 60W LF-399D 80W
Temperature range	150-480 °C 302-896 °F
Standard tip	44-510601



XYTRONIC CO.,LTD
<http://www.xytronic.com>

LF-853D MULTI-FUNCTION SMD REWORK SYSTEM



CE RoHS conform



SPECIFICATION:

Input power	100-120Vac 60Hz; 220-240Vac 50Hz	
SOLDERING	Wattage	100 W
	Temperature range	150-480°C 302-896°F
	Standard tip	44-510601
SMD REWORK	Wattage	600 W
	Temperature range	100-480°C 212-896°F
	Air Flow Capacity	1.5L/min~40L/min
DESOLDERING	Wattage	100 W
	Temperature range	300-450°C 572-842°F
	Standard tip	44-915412

LF-861D



Product Features :

SMD Rework Station incl. 3-fold nozzle set, and holder

Very powerful device in space-saving, professional metal housing.

Air flow adjustable from 1.5L/min to 70L/min

- Temperature adjustable from 100 - 500° C
- Hand heater 1300 Watt

Control sensors guarantee an even and stable temperature level

High performance diaphragm pump for low vibration and quiet working conditions.

High performance heating element for very fast heat-up time and long service intervals.

Dual display for temperature and air, "key-touch" operation for most accurate inputs and convenient control.

Auto Cooling Design: When the station is turned off, the cooling system works automatically to protect the heating element.

ESD protected for safe working on components that could be damaged by static discharge.

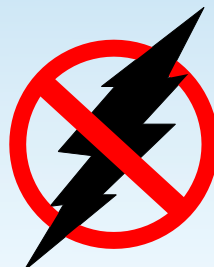
Scope of Delivery:

Hot air station

3 nozzles (Ø 8 mm / Ø 10 mm / Ø 12 mm)

SPECIFICATION :

Input power	100-120Vac 60Hz 220-240Vac 50Hz
Wattage	1300W
Temperature range	100-500°C 212-932°F
Air Flow Capacity	1.5L/min~70L/min



RoHS



XYTRONIC CO.,LTD
<http://www.xytronic.com>

LF-988D+ LCD TOUCH SCREEN CONTROL SOLDERING AND DESOLDERING STATION



Product Features :

- 1)Electrically isolated electronic zero voltage control circuit for soldering work on sensitive components, 32 V operation
- 2)Precise temperature control
- 3)Fast and exact temperature setting via touch control
- 4)Ergonomic and lightweight soldering iron, internally heated soldering tip
- 5)3 pre-programmable soldering and desoldering temperatures that can be called up by key
- 6)Fast heating (400 ° C in 15 s)
- 7)Soldering temperature between 100 ° C and 550 ° C, desoldering temperature adjustable from 100 ° C to 500 ° C
- 8)ESD safe version, with equipotential bonding socket
- 9)Remote control of the suction pump from the desoldering iron, automatic overrun
- 10)Automatic power shutdown after 30 minutes of non-use

LF-1600 SOLDERING STATION



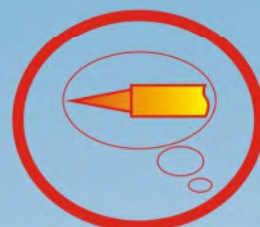
Humanism interface:
The angle of control panel is conform to humanism .It's easy to read and set



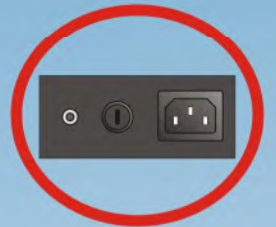
Minytype station:
Less desktop occupation



Eligibility fitting combination:
Provides many kinds of for the customer selects the disposition, enable the customer to obtain a more reasonable enhancement in the economic efficiency.



Hi-power heater:
Temperature climbs fast, favored by lead free soldering



Build-up grounding:
Can link up ESD wrist strap

Product Features:

Password lock: Convenient for control

Real-temp modification: Real temperature can modify Manually

Minytype station: Less desktop occupation

°C / °F Select Mode: May set display °C / °F

Sensor fail notification: When the sensor failed, "S-E" will Be shown, SIA will power off

Heater fail notification: When the heater failed, "H-E" will Be shown, SIA will power off

Heating curve determination:



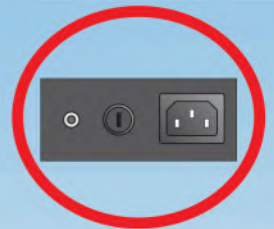
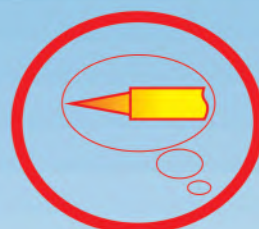
SPECIFICATION:

Input power	220-240Vac 50Hz
Wattage	80W
Temperature range	200-480 °C
Standard tip	44-510601



XYTRONIC CO.,LTD
<http://www.xytronic.com>

LF-1700 SOLDERING STATION



Humanism interface:
The angle of control panel is conform to humanism .It's easy to read and set

Minitype station:
Less desktop occupation

Eligibility fitting combination:
Provides many kinds of for the customer selects the disposition,

Hi-power heater:
Temperature climbs fast, favored by lead free soldering

Build-up grounding:
Can link up ESD wrist strap

Product Features:

Password lock: Convenient for control

Auto sleep: Save power and the life of tip

Minitype station: Less desktop occupation

°C/°F Select Mode: May set display °C/°F

Quick heat: Room temperature to 400C time taken 20s

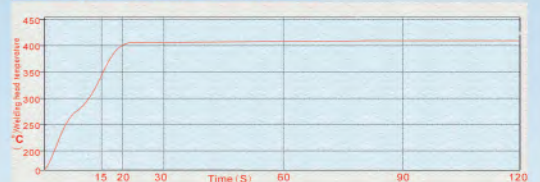
Real-temp modification: Real temperature can modify Manually

Sensor fail notification: When the sensor failed, "S-E" will Be shown, SIA will power off

Heater fail notification: When the heater failed, "H-E" will Be shown, SIA will power off

enable the customer to obtain a more reasonable enhancement in the economic efficiency.

Heating curve determination



SPECIFICATION:

Input power	220-240Vac 50Hz
Wattage	100W CERAMIC HEATER)
Temperature range	150-480 °C 302-896 °F
Standard tip	44-510601



XYTRONIC CO.,LTD
<http://www.soldering-station.com>



RoHS



LF-2900 LCD DISPLAY TOUCH SCREEN CONTROL

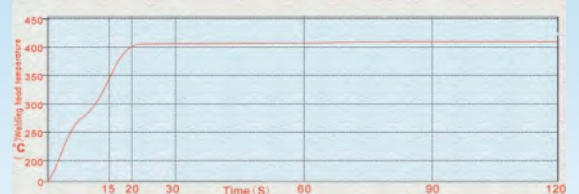


Product Features :

Professional soldering station with high quality low voltage soldering iron (32V/100W) for the use in production or repair

- large LCD display (6 x 5 cm)
- temperature range 100 - 500° C, suitable for lead-free soldering
- Temperature sensor in the soldering tip
- very fast control and high control accuracy
- ESD-protected housing
- exchangeable soldering iron
- preselection of 3 temperatures

Heating curve determination :



SPECIFICATION :

Input power	220-240Vac 50Hz
Wattage	100W
Temperature range	100-500°C 212-932°F
Standard tip	44-510601



XYTRONIC CO.,LTD
<http://www.xytronic.com>



LF-3200 SOLDERING STATION



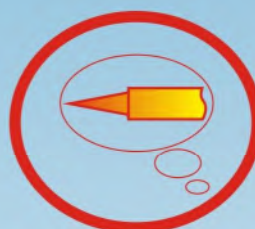
RoHS conform



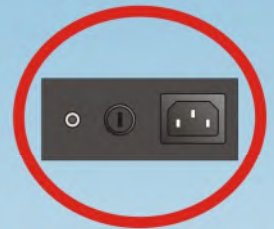
Humanism interface:
The angle of control panel is conform to humanism .It's easy to read and set



Full ardal body:
Conveyance security, sturdy and durable, equipent longer duration



High frequency heater:
Temperature climbs fast, favored by lead free soldering



Build-up grounding:
Can link up ESD wrist strap

Product Features:

Password lock: Convenient for control

Auto sleep: Save power and the life of tip

Auto sleep: Save power and the life of tip

Minitype station: Less desktop occupation

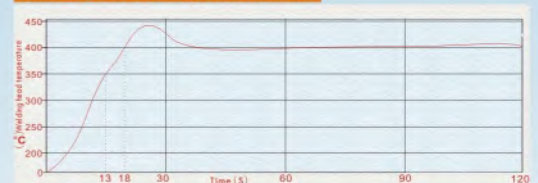
Quick heat: Room temperature to 350 C time taken 13s

Real-temp modification: Real temperature can modify Manually

Sensor fail notification: When the sensor failed, "S-E" will Be shown, SIA will power off

Heater fail notification: When the heater failed, "H-E" will Be shown, SIA will power off

Heating curve determination:



SPECIFICATION:

Input power	100-120Vac 60Hz 220-240Vac 50Hz
Wattage	120W
Temperature range	100-520 °C 212-968 °F
Standard tip	44-413068



XYTRONIC CO.,LTD
<http://www.xytronic.com>

LF-3300 LCD TOUCH SCREEN CONTROL (HIGH FREQUENCY) SOLDERING STATION



CE
RoHS
conform

Product Features :

The high power of the station of 180 W is designed to more than adequately meet the current and future requirements for professional lead-free soldering in industrial production.

- Temperature range 100 - 500 °C
- large LCD touch screen, 7.5 x 6.2 cm
- temperature display with set and actual value
- ESD-safe housing design
- exchangeable soldering iron with plug-in connection at the station
- Preset setting of 3 temperatures
- energy saving function adjustable (0 - 999 seconds)
- all settings are accessible via the touch screen
- handy 180 W high frequency soldering iron

Heating curve determination :



SPECIFICATION :

Input power	100-120Vac 60Hz 220-240Vac 50Hz
Wattage	180W
Temperature range	100-500°C 212-932°F
Standard tip	44-413068



XYTRONIC CO.,LTD
<http://www.xytronic.com>

LF-8800 SOLDERING AND DESOLDERING STATION



CE
RoHS



Product Features:

Password lock: Convenient for control

°C / °F Select Mode: May set display °C / °F

IRON WORKING OPTION: It can save energy and extend machine life.

Alloy aluminium shell: Block off electromagnetic interference, high strength configuration and less heat cumulation

ENERGY SAVER MODE: The station will enter the sleep mode if it has been idle for 20 minutes, when over 40 minutes without operation the station can enter the power off suspend status and cut off the power of the heater to extend tip life.

Sensor fail notification: When the sensor failed, "S-E" will be shown, SIA will power off.

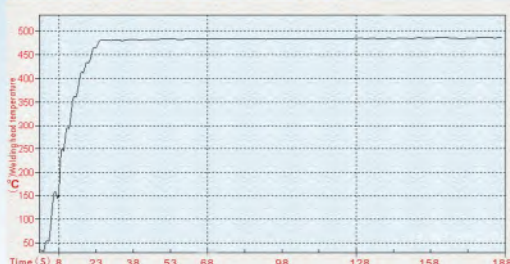
Heater fail notification: When the heater failed, "H-E" will be shown, SIA will power off.

DELAYED SUCTION: A delayed switch feature has been incorporated for the unit that allows the pump to continue sucking for 1.5 seconds after the actuator switch is released.

The station has a self-contained, and quiet running vacuum pump which is electronically controlled and will not overload with continuous use, eliminating the need for additional shop air.

The LED of the station displays intuitionistic content, the station can be operated easily by pressing keys.

SIA Heating curve determination:



SPECIFICATION:

Input power	220-240Vac 50Hz	
Wattage	SIA	100 W
	DIA	100 W
Temperature range	SIA	150-480°C 302-896°F
	DIA	300-450°C 572-842°F
Standard tip	SIA	44-510601
	DIA	44-915412



XYTRONIC CO., LTD
<http://www.xytronic.com>

XY-400W LCD TOUCH SCREEN CONTROL SOLDERING STATION



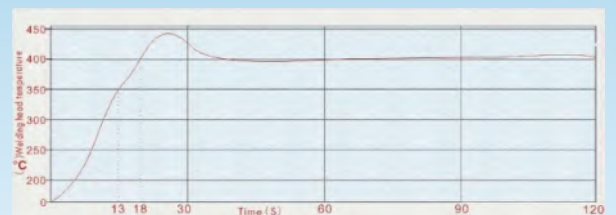
CE
RoHS
conform

Product Features :

The high power of the station of 400 W is designed to more than adequately meet the current and future requirements for professional lead-free soldering in industrial production.

- Temperature range 100 - 500 °C
- Large LCD touch screen, 7.5 x 6.2 cm
- Temperature display with set and actual value
- ESD-safe housing design
- Exchangeable soldering iron with plug-in connection at the station
- Preset setting of 3 temperatures
- Energy saving function adjustable (0 - 999 seconds)
- All settings are accessible via the touch screen
- Handy 400W high temperature soldering iron

Heating curve determination :



SPECIFICATION :

Input power	120Vac 60Hz 230Vac 50Hz
Wattage	400W
Temperature range	100-500°C 212-932°F
Standard tip	



XYTRONIC CO.,LTD
<http://www.xytronic.com>